



Nichirei Logistics Group Inc.

APEC HLDP on “Enhancing Public and Private Partnership to Reduce Food Losses and Waste for a Sustainable APEC Food System”

June 14, 2018

By: Nuttaphol Aueareechit
Overseas Business Development Division



Holding Company

Nichirei



Established

December 1st, 1945

Representative Director and Chairman
Representative Director and President

Toshiaki Murai
Kunio Otani

Paid-in Capital

30,307 Million Yen

Net Sales(consolidated)

539,657 Million Yen
*(fiscal year ended March 31,2017)

Number of Employees(consolidated)

14,682 *as of March 31,2017

**Nichirei Foods
Inc.**



Processed Foods

**Nichirei Fresh
Inc.**



**Marine & Meat
& Poultry**

**Nichirei
Logistics Group
Inc.**



Logistics

**Nichirei
Biosciences Inc.**



Biosciences



Nichirei Logistics Group Inc.

Logistics Business

Logistics Network Inc.

NK Trans Inc.

Regional warehousing Business

Nichirei Logistics Hokkaido Inc.

Kyokurei Inc.

Nichirei Logistics Chushikoku Inc.

Nichirei Logistics Tohoku Inc.

Nichirei Logistics Tokai Inc.

Nichirei Logistics Kanto Inc.

Nichirei Logistics Kansai Inc.

Nichirei Logistics Kyusyu Inc.

Overseas Business

▼ Europe

Nichirei Holding Holland B.V.

Hiwa Rotterdam Port Cold Stores B.V.

Thermotrafic Holland B.V.

Eurofrigo B.V.

Thermotrafic UK Ltd.

Thermotrafic GmbH

Frigo Logistics Sp. z o.o.

Godfroy S.A.S

▼ China

Shanghai Fresh Line Express Co. Ltd.

▼ Thailand

SCG Nichirei Logistics Co., Ltd.

Engineering Business

Nichirei Logistics Engineering Inc.



Food Loss in Japan

N NICHIREI LOGISTICS GROUP INC.

Based on information from The Ministry of Agriculture, Forestry and Fisheries of Japan (2015)

Consumable Foods
83 million tons

**Lost or Transformed
for Alternative Use**
20 million tons

- Reduction through the process of drying or dehydration (2.2m tons)
- Alternative Use such as wheat bran or soybean meal (9m tons)
- Industrial Waste (8m tons)

Food Waste
6.46 million tons

**Household
Waste**
**8.3 million
tons**



- 1st Food Bank in Japan
- MOUs signed with 1,445 companies

- Since 2005, Nichirei Foods been the sponsor of Second Harvest Japan by supplying them with frozen food products that are “BROKEN”, damage to the outer box but inner product are still intact
- Nichirei Logistics Group provides free storage and deliveries services of such products to Second Harvest designated locations



- **Japan's Relative Poverty Rate is at 15.6% in 2015**
Based on survey conducted by the Ministry of Health, Labour and Welfare of Japan





- Working together with the Ministry of Land, Infrastructure, Transport and Tourism of Japan (MLIT) to promote the establishment of reliable Cold Chain Logistics Network in the ASEAN region.

“Creation of the ASEAN-Japan Guidelines on Cold Chain Logistics”



- Contribution to the formulation of the PAS 1018:2017 (BSI) standard which has been published in 2017.

PAS 1018:2017

“Setting out requirements for refrigerated delivery service providers so that they can improve the quality and consistency of refrigerated parcel delivery services”

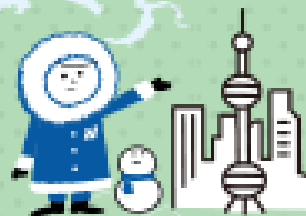
bsi.



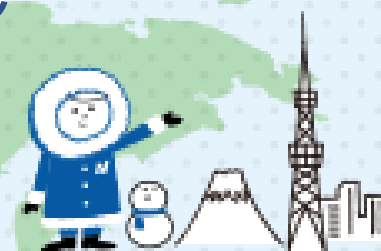
Thank you for your attention!



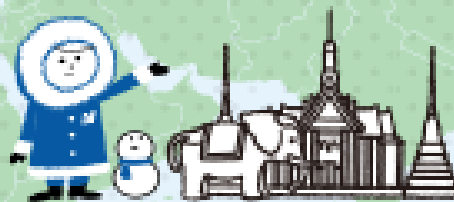
Europe
About 500,000 ton
capacity



China
About 5,000 ton
capacity



Japan
About 1,500,000 ton
capacity



Thailand
About 23,000 ton
capacity